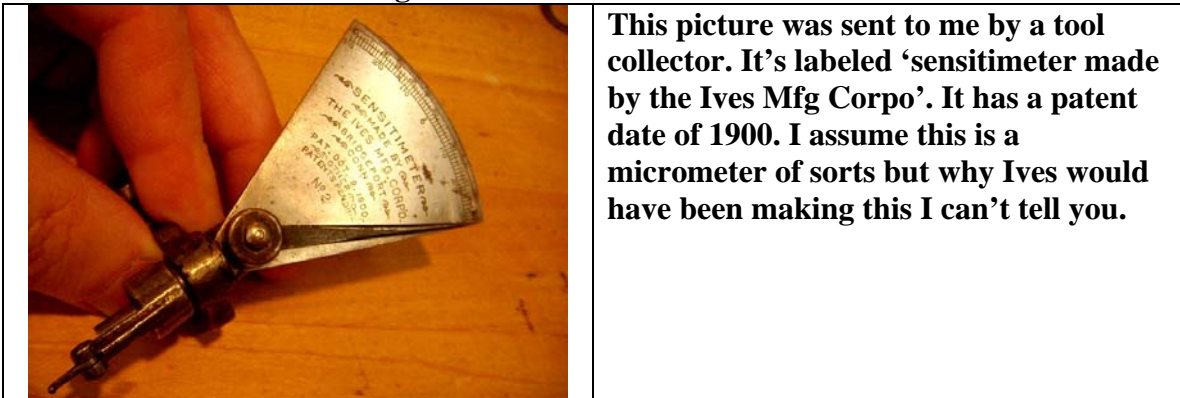


## Everything But Trains

Even train collectors need a hobby! Over the years of chasing down any train with the Ives name on it, I've come across numerous pieces of Ives history that don't really fit on one of my train shelves. I don't know a lot about most of these pieces and in some cases not sure they were even made by Ives, but they are part of the history and maybe someone out there can shed some light on where or how these came to be.



The two photographs above show a coffee mug with Ives graphics from the 1920s. A set of six of these were found in an estate sale out in Indiana. The woman that bought these mugs was a collector of glassware and claimed that the markings on the bottom dated the mugs back to the 1920s?



This picture was sent to me by a tool collector. It's labeled 'sensitimeter made by the Ives Mfg Corp'. It has a patent date of 1900. I assume this is a micrometer of sorts but why Ives would have been making this I can't tell you.



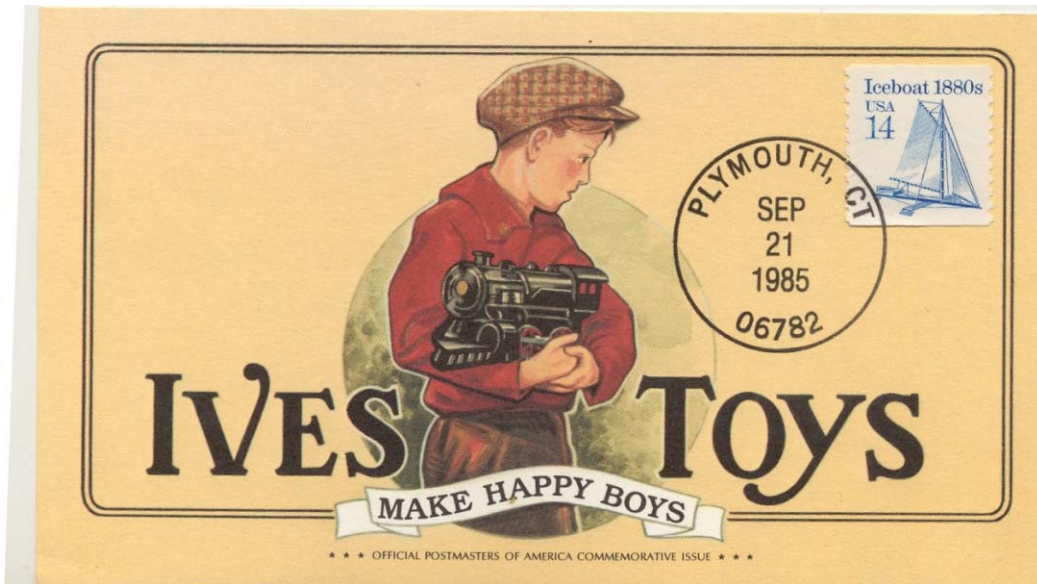
It would appear that IVES produced pocket calendars for several years prior to WWI. These two plus one from 1912 are the only ones I've seen, but there are reports of others. Based on the printing inside it would appear that these were distributed to dealers and employees as promotional items. These calendars were filled with all sorts of useful information like the population of all the big cities, postage rates and the price of a loaf of bread (.10) and a dozen eggs (.60).



This is a lighted sign that recently showed up on Ebay. The graphic on the glass is similar to the cover of the 1926 catalog, but it is different and has been imprinted directly onto the glass plate.



Pictured here are from left to right a lighter, coffee mug and dinner plate all with Ives graphics from the 1931-32 period. I am pretty sure these weren't made by Ives, but don't really know who or when they were made. The style of the lighter is from the 1950s. The plate is labeled as made by "Anchor - Hocking / Fire - King / Dinnerware ". According to the Anchor Hocking company they made the 'Fire King' brand from the 1940s through the 1970s. The graphics on the plates show either an Ives No. 10 or the 1770 steam engine and appear to be exact cuts out of the 1932 catalog.



this post card was produced in 1985 by the post office, note the card is postmarked Plymouth Ct. where Edward started the original IVES company. The card is postmarked Sept 21st the 100th anniversary of the patent date for the IVES walking Santa which the post card calls an excellent example of the workmanship that the IVES company became synonymous with. I guess the Post Office needed something to commemorate.